

**ADVANCED GCE
MATHEMATICS (MEI)**

4753/01

Methods for Advanced Mathematics (C3)

FRIDAY 11 JANUARY 2008

Morning

Time: 1 hour 30 minutes

Additional materials: Answer Booklet (8 pages)
Graph paper
MEI Examination Formulae and Tables (MF2)

INSTRUCTIONS TO CANDIDATES

- Write your name in capital letters, your Centre Number and Candidate Number in the spaces provided on the Answer Booklet.
- Read each question carefully and make sure you know what you have to do before starting your answer.
- Answer **all** the questions.
- You are permitted to use a graphical calculator in this paper.
- Final answers should be given to a degree of accuracy appropriate to the context.

INFORMATION FOR CANDIDATES

- The number of marks is given in brackets [] at the end of each question or part question.
- The total number of marks for this paper is 72.
- You are advised that an answer may receive **no marks** unless you show sufficient detail of the working to indicate that a correct method is being used.

This document consists of **4** printed pages.

Section A (36 marks)

1 Differentiate $\sqrt[3]{1+6x^2}$. [4]

2 The functions $f(x)$ and $g(x)$ are defined for all real numbers x by

$$f(x) = x^2, \quad g(x) = x - 2.$$

(i) Find the composite functions $fg(x)$ and $gf(x)$. [3]

(ii) Sketch the curves $y = f(x)$, $y = fg(x)$ and $y = gf(x)$, indicating clearly which is which. [2]

3 The profit $\pounds P$ made by a company in its n th year is modelled by the exponential function

$$P = Ae^{bn}.$$

In the first year (when $n = 1$), the profit was $\pounds 10\,000$. In the second year, the profit was $\pounds 16\,000$.

(i) Show that $e^b = 1.6$, and find b and A . [6]

(ii) What does this model predict the profit to be in the 20th year? [2]

4 When the gas in a balloon is kept at a constant temperature, the pressure P in atmospheres and the volume $V \text{ m}^3$ are related by the equation

$$P = \frac{k}{V},$$

where k is a constant. [This is known as Boyle's Law.]

When the volume is 100 m^3 , the pressure is 5 atmospheres, and the volume is increasing at a rate of 10 m^3 per second.

(i) Show that $k = 500$. [1]

(ii) Find $\frac{dP}{dV}$ in terms of V . [2]

(iii) Find the rate at which the pressure is decreasing when $V = 100$. [4]

5 (i) Verify the following statement:

' $2^p - 1$ is a prime number for all prime numbers p less than 11'. [2]

(ii) Calculate 23×89 , and hence disprove this statement:

' $2^p - 1$ is a prime number for all prime numbers p '. [2]

- 6 Fig. 6 shows the curve $e^{2y} = x^2 + y$.

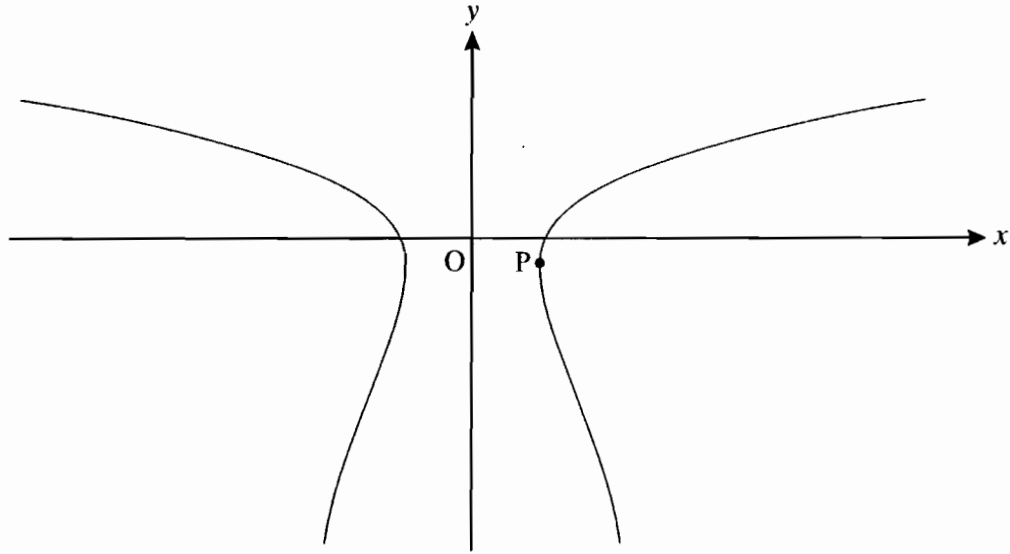


Fig. 6

- (i) Show that $\frac{dy}{dx} = \frac{2x}{2e^{2y} - 1}$. [4]
- (ii) Hence find to 3 significant figures the coordinates of the point P, shown in Fig. 6, where the curve has infinite gradient. [4]

Section B (36 marks)

- 7 A curve is defined by the equation $y = 2x \ln(1+x)$.

- (i) Find $\frac{dy}{dx}$ and hence verify that the origin is a stationary point of the curve. [4]
- (ii) Find $\frac{d^2y}{dx^2}$, and use this to verify that the origin is a minimum point. [5]
- (iii) Using the substitution $u = 1+x$, show that $\int \frac{x^2}{1+x} dx = \int \left(u - 2 + \frac{1}{u}\right) du$.
- Hence evaluate $\int_0^1 \frac{x^2}{1+x} dx$, giving your answer in an exact form. [6]
- (iv) Using integration by parts and your answer to part (iii), evaluate $\int_0^1 2x \ln(1+x) dx$. [4]

- 8 Fig. 8 shows the curve $y = f(x)$, where $f(x) = 1 + \sin 2x$ for $-\frac{1}{4}\pi \leq x \leq \frac{1}{4}\pi$.

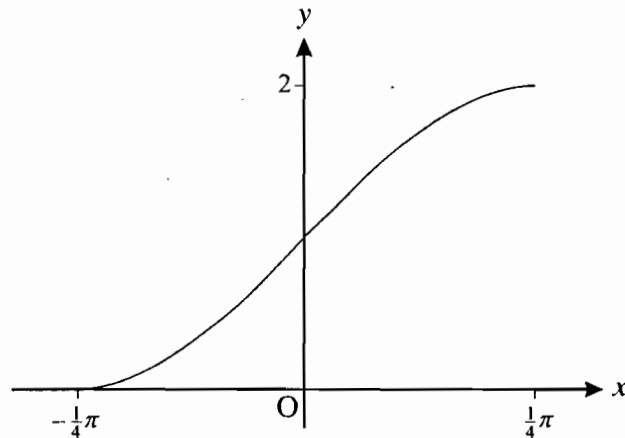


Fig. 8

- (i) State a sequence of two transformations that would map part of the curve $y = \sin x$ onto the curve $y = f(x)$. [4]
- (ii) Find the area of the region enclosed by the curve $y = f(x)$, the x -axis and the line $x = \frac{1}{4}\pi$. [4]
- (iii) Find the gradient of the curve $y = f(x)$ at the point $(0, 1)$. Hence write down the gradient of the curve $y = f^{-1}(x)$ at the point $(1, 0)$. [4]
- (iv) State the domain of $f^{-1}(x)$. Add a sketch of $y = f^{-1}(x)$ to a copy of Fig. 8. [3]
- (v) Find an expression for $f^{-1}(x)$. [2]

Permission to reproduce items where third-party owned material protected by copyright is included has been sought and cleared where possible. Every reasonable effort has been made by the publisher (OCR) to trace copyright holders, but if any items requiring clearance have unwittingly been included, the publisher will be pleased to make amends at the earliest possible opportunity.

OCR is part of the Cambridge Assessment Group. Cambridge Assessment is the brand name of University of Cambridge Local Examinations Syndicate (UCLES), which is itself a department of the University of Cambridge.